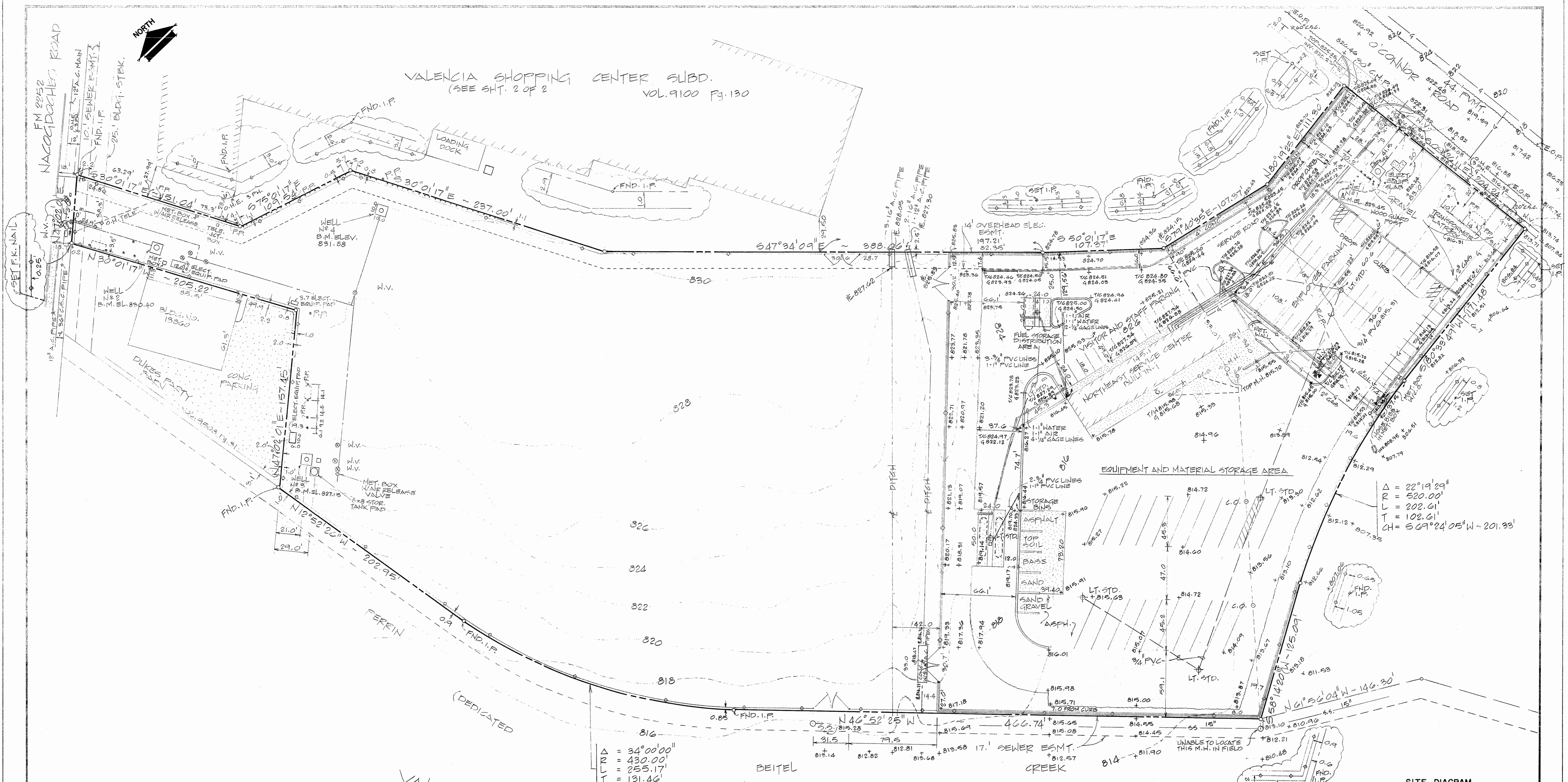


I. NORTHEAST SERVICE CENTER AS-BUILT DRAWINGS

Original As-Built Drawings of the SAWS Northeast Service Center that is to be Demolished and Fuel Areas Remediated and Paved.



VALENCIA SHOPPING CENTER SUBD.
(SEE SHT. 2 OF 2)
VOL. 9100 Pg. 130



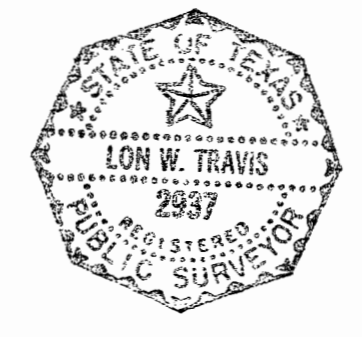
$\Delta = 34^{\circ}00'00''$
 $R = 430.00'$
 $L = 255.17'$
 $T = 131.46'$
 $CH = N29^{\circ}52'25''W - 251.44'$

BOUNDARY LINE AND TOPOGRAPHIC SURVEY
 STATE OF TEXAS
 COUNTY OF BEXAR

I, LON W. TRAVIS, REGISTERED PROFESSIONAL SURVEYOR, HEREBY CERTIFY THAT THE ABOVE PLAT WAS PREPARED FROM AN ACTUAL SURVEY MADE ON THE GROUND UNDER MY SUPERVISION OF: 9.3555 ACRES (407,527.156 SQUARE FEET) OF LAND, MORE OR LESS, OUT OF THE JOHN NEILL SURVEY NO. 303 AND THE A.G. MAY SURVEY NO. 84, BEXAR COUNTY, TEXAS, AND THERE ARE NO VISIBLE EASEMENTS OR ENCROACHMENTS, EXCEPT AS SHOWN HEREON.

Jan 11, 2007

R.F.B.



SITE DIAGRAM

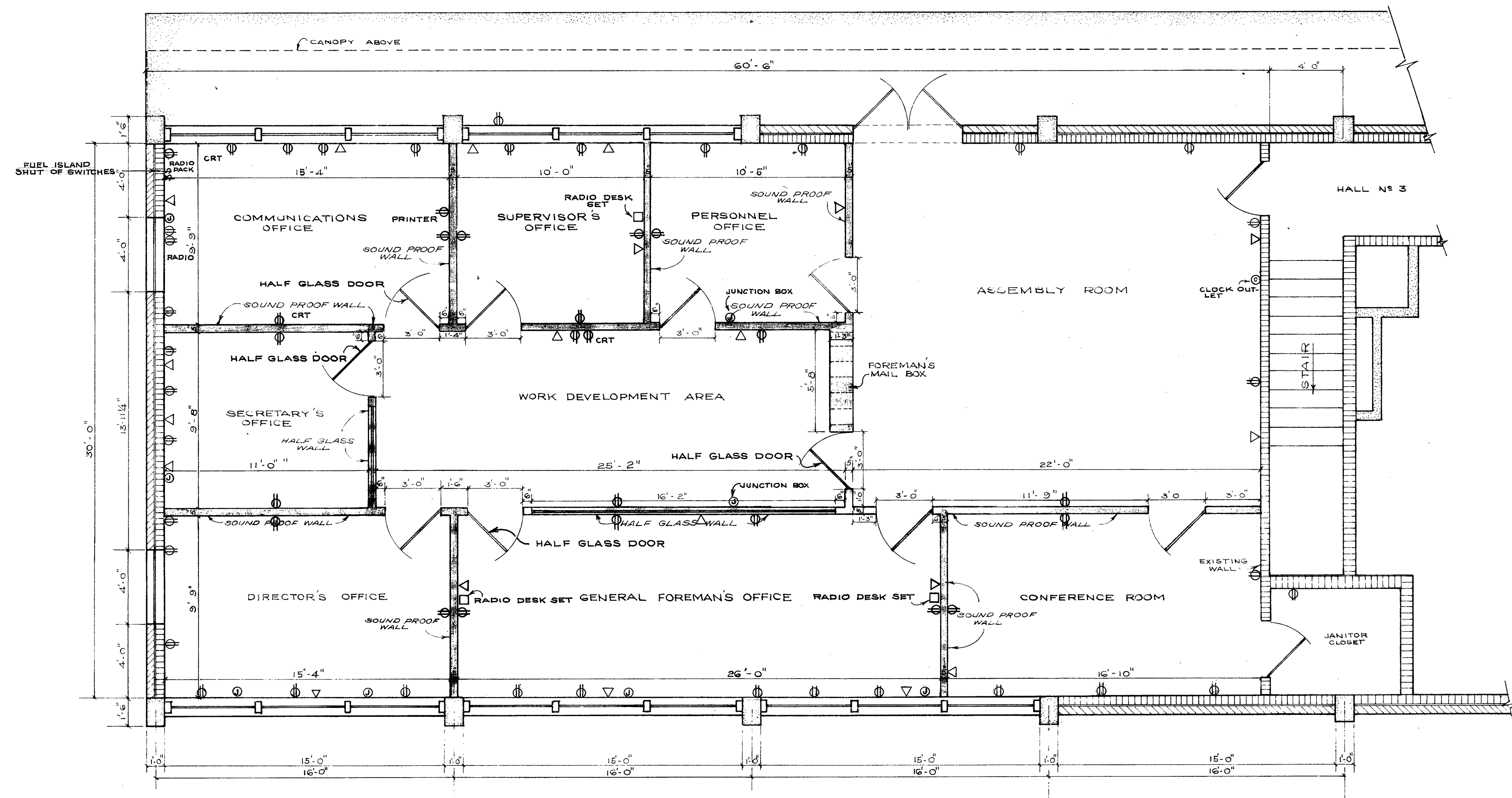
LEGEND	
PROP. WATER MAIN	— 6" CW —
EXIST. WATER MAIN	— 6" CW —
GAS MAIN	— 2" —
SANITARY SEWER	— 8" SA —
STORM SEWER	— 24" ST —
UTILITY POLE LINE	— T —
ELECTRIC CABLE	— E —
TELEPHONE CABLE	— T —
RESISTIVITY READING	— R —
NEW SERVICE:	
1" OR LARGER	— 3/4" —
SERVICE RECONNECT:	— 3/4" —
1" OR LARGER	— 3/4" —
SERVICE RELAY:	— 3/4" —
1" OR LARGER	— 3/4" —
SERVICE RELOCATE:	— 3/4" —
1" OR LARGER	— 3/4" —
RELOCATE METER	— 3/4" —

No.	DESCRIPTION	DRAWN	APPROVED	DATE

REVISIONS	

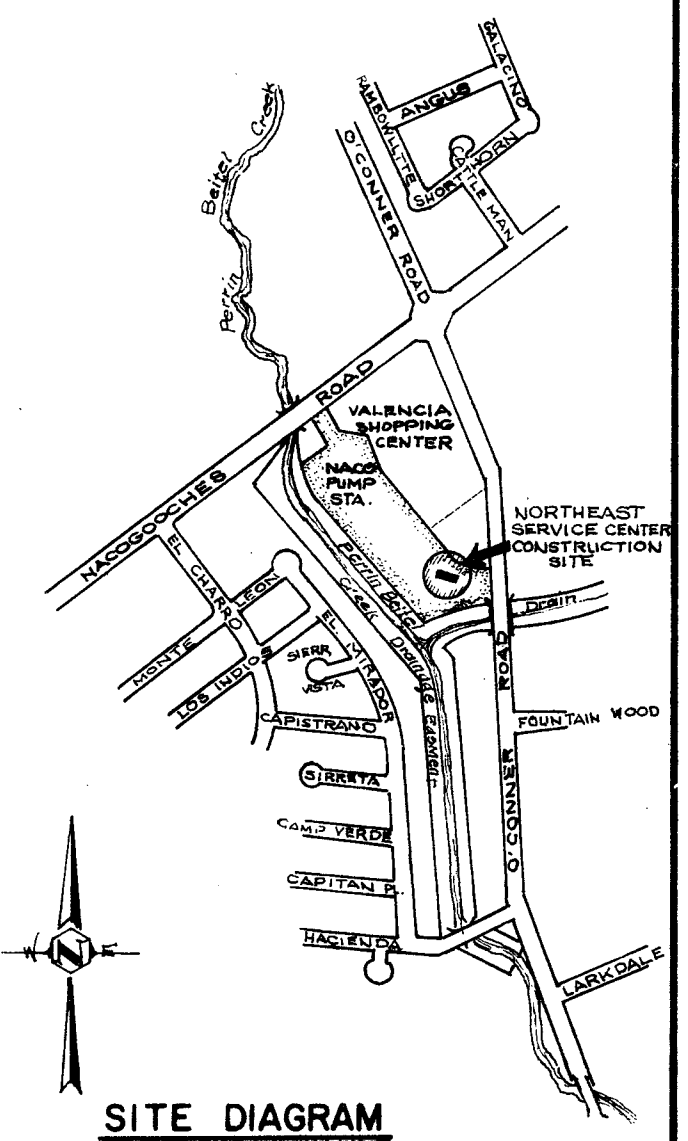
AS-BUILT & TOPOGRAPHIC SURVEY	
NACO PUMP STATION AND NORTHEAST SERVICE CENTER	
DEVELOPER	
CONT.	BUDGET PROJ.
SUBMITTED	
APPROVED	
MAP NO.	
SECTION No.	SHEET
Dr. CH. JOB NO.	Of 2





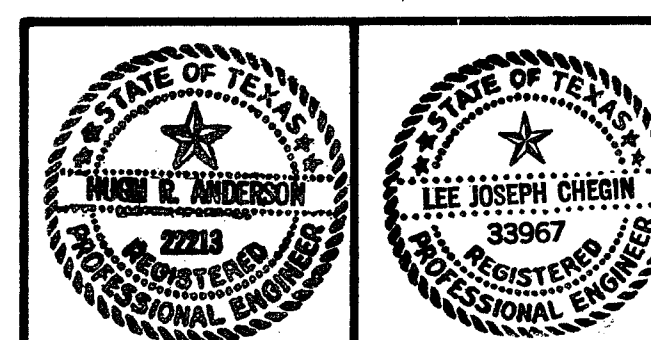
- LEGEND**
- RADIO DESK SET
 - ▽ TELEPHONE
 - ⊕ CRT, PRINTER, DEDICATED CIRCUIT
 - ⊙ JUNCTION BOX
 - ⊙ CLOCK OUTLET

PLAN
SECOND FLOOR
 Scale: 1/4" = 1'-0"



LEGEND		REVISIONS	
PROP. WATER MAIN	— 12" —	No.	Description
EXIST. WATER MAIN	— 8" —	Drawn	Approved
GAS MAIN	— 2" —		Date
SANITARY SEWER	— 8" —		
STORM SEWER	— 24" —		
UTILITY POLE LINE	— E —		
ELECTRIC CABLE	— T —		
TELEPHONE CABLE	— R —		
RESISTIVITY READING	— R —		
NEW SERVICE:			
3/4"	=====		
1" OR LARGER	=====		
SERVICE RECONNECT:			
3/4"	=====		
1" OR LARGER	=====		
SERVICE RELAY:			
3/4"	=====		
1" OR LARGER	=====		
SERVICE RELOCATE:			
3/4"	=====		
1" OR LARGER	=====		
RELOCATE METER	▷		

NORTHEAST SERVICE CENTER PARTITIONS AND ELECTRICAL OUTLETS AND TELEPHONES	
DEVELOPER	CITY WATER BOARD
CONT.	BUDGET PROJ.
SUBMITTED	10/15/83
APPROVED	10/15/83
MAP NO.	BUILDING PLANS P.A. 2
SECTION No.	2
Dr. [Signature]	Ch. [Signature]
JOB NO. 82-8238 OF 2 C.W.B.	



Northeast Service Center

